



CHONGQING ZONGWO VEHICLE INDUSTRY (GROUP) CO., LTD.  
CHONGQING ZONGLONG MOTOR TRICYCLE CO., LTD.









ASSEMBLY WORKSHOP

# ZONLON

CHONGQING ZONGWO VEHICLE INDUSTRY (GROUP) CO., LTD.  
CHONGQING ZONGLONG MOTOR TRICYCLE CO., LTD.



OFFICE



CHASSIS WELDING



CHASSIS ELECTRO PAINTING



CARGO BOX WELDING



CARGO BOX / CABIN ELECTRO PAINTING



CARGO TRICYCLE ASSEMBLY LINE



CABIN TRICYCLE ASSEMBLY LINE



PACKING



CONTAINER LOADING



# COMPANY PROFILE

Chongqing Zonglong Motor Tricycle Co.,Ltd is located in Chongqing- heavy industry city of South-west of China, famous for its automotive and motorcycle industry.

As a wholly invested subsidiary under Chongqing Zongwo Vehicle Industry (Group) Co., Ltd., with 15 years expertise dealing motor tricycles and an total investment of more than 100 million RMB Yuan, Chongqing Zonglong Motor Tricycle Co.,Ltd is specialized in motor tricycle research, manufacturing and sales, on a land area of over 200 Mu or 1400 acres, employing over 500 staffs including over 100 engineers and technicians for operating its cargo box plant, painting plant, frame plant, cabin plant, rear axle plant, reverse gear plant and modern assembly and testing line.

With an annual production capacity of 60,000 units assembled tricycles in different models for cargo, passenger and other purpose, and strict quality controlling system duly accredited with CCC certification, ISO certification and certified World Manufacturer Identifier (WMI) member, the ZONLON brand tricycles are well accepted in China and more than 20 overseas markets such as South America, Africa, Middle East, South-east Asia.

The four major manufacturing processes such as stamping, welding, painting and assembling are also conducted in our own factories. There are hydraulic stamping press, phosphating, pre-painting treatment plant, electrophoresis plant, coating and baking facilities for cargo boxes, cabins, chassis.

At-the-site inspections, 100% testing before roll off and strict in-process job instructions are followed to make sure all finished products come to meet the designed objectives since the ZONLON brand is promoted and justified by its quality product.

A comprehensive marketing system is employed for effective and efficient services prior to sales, on-going sales services and after sales services to add value to our customers world wide.

With reviewing its successful past in pursuit of leading performance in the motorcycle industry, Zonlon Motor will continue to supply quality and high performance products world wide under the original principle of INNOVATION, DEVELOPMENT, PURSUIT OF PERFECTION AND ADDING VALUE TO CUSTOMERS.

## 3C



## ISO 9002



## WMI



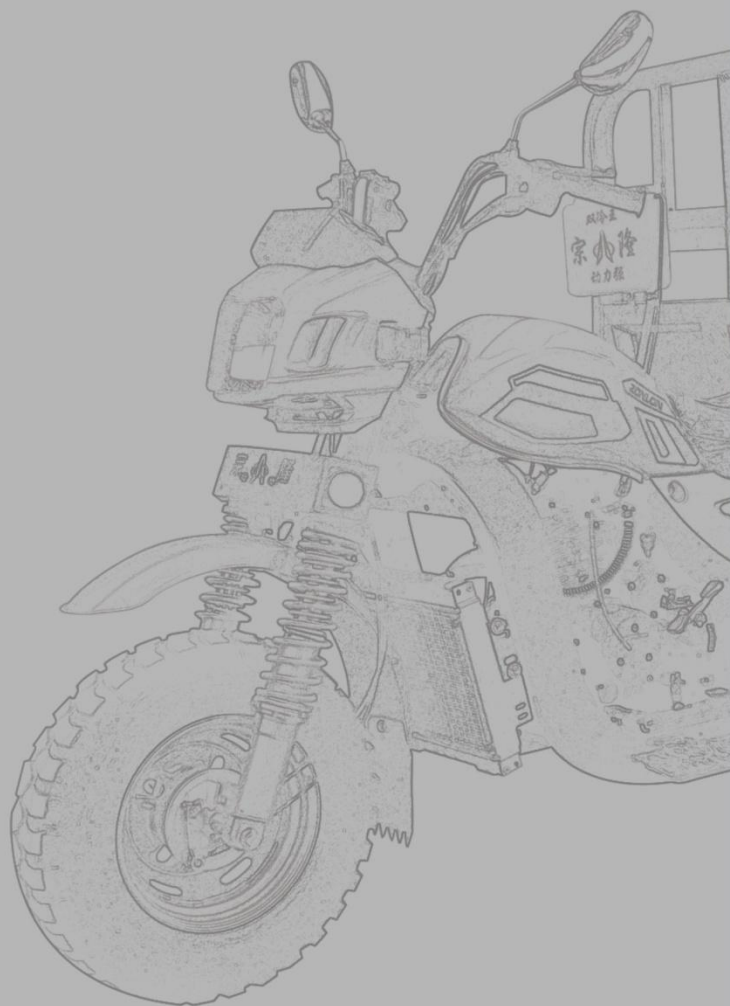
## PATENT CERTIFICATE





# ZONLON

CHONGQING ZONGWO VEHICLE INDUSTRY (GROUP) CO., LTD.  
CHONGQING ZONGLONG MOTOR TRICYCLE CO., LTD.



## CONTENTS

### CARGO SERIES ————— 01~12

ZL200ZH-LD	02	ZL200ZH-LG	11
ZL250ZH-LW	03/04	ZL200ZH-LGO	11
ZL150ZH-TZ	05	ZL200ZH-LF3	11
ZL150ZH-A5	06	ZL200ZH-LF4	11
ZL200ZH-5N	07	ZL200ZH-LF5	12
ZL150ZH-QL	08	ZLK305	12
ZL150ZH-Q	09	ZLK608	12
ZL130ZH	10	ZLK800	12

### PASSENGER SERIES ————— 13~20

ZL150ZK-4S	14	ZL250ZK-BJ	17
ZL200ZK-5S	15	ZL200ZK-TK	18
ZL200ZK-7S	15	ZL200ZK-LIMO	19/20
ZL175ZK-X	16		

### SPECIAL VEHICLE SERIES ————— 21~28

ZL200ZH-BT	22	ZL200ZK-BA	26
ZL200ZH-MS	23/24	ZL200ZH-GD	27
ZL150ZK-CA	25	ZL250ZH-GT	28

### SPARE PARTS ————— 29~36

ENGINE & PARTS	30	LEAF SPRING	34
CARGO BOX	31	TYRE & RIM	35
FRONT SHOCK ABSORBER	32	SEMI-CABIN	36
REAR AXLE & REVERSE	33		



# CARGO SERIES

ZONLON LIGHT-TRUCK, YOUR AFFORDABLE CARGO CARRIER  
SUITABLE FOR VARIOUS ROADS.





# ZL200ZH-LD



## SPECIFICATION

<b>ENGINE</b>	
ENGINE TYPE	SINGLE CYLINDER, WATER COOLING, 4-STROKE
DISPLACEMENT	197ML
COMPRESSION RATIO	10.2:1
MAX POWER OUTPUT	10.3 / 7500 KW/R/MIN
MAX TORQUE	14.2 / 6000 N·M/R/MIN
<b>CLUTCH</b>	
WET MULTI-PLATE, PRESSURE SPLASH	
<b>TRANSMISSION &amp; REVERSE</b>	
5 FORWARD GEARS + 1 REVERSE	
<b>STEERING MECHANISM</b>	
STEERING HANDLE BAR	
<b>CHASSIS</b>	
DOUBLE KEEL CHASSIS FR / RR 50×100 RECTANGULAR STEEL TUBE	
<b>FRONT SUSPENSION</b>	
LONGBA TYPE FRONT SHOCK ABSORBER	
<b>REAR SUSPENSION</b>	
7 PCS PICKUP LEAF SPRING, CHAN'AN REAR AXLE	
<b>BRAKING SYSTEM</b>	
FR 160, RR 220, MECHANICAL BRAKING	
<b>WHEEL TIRE</b>	
FR / RR 4.50-12	
<b>BATTERY</b>	
12V / 9AH	
<b>STARTING METHOD</b>	
ELECTRIC / KICK STARTER	
<b>FUEL TANK</b>	
GASOLINE, 13L	
<b>FUEL CONSUMPTION</b>	
≤354	
<b>GROUND CLEARANCE</b>	
160MM	
<b>MAX SPEED</b>	
60 KM/H	
<b>OVERALL DIMENSION</b>	
WHEEL BASE	2230MM
DIMENSION	3400×1350×1550MM
CARGO BOX SIZE	1800×1350MM
<b>VEHICLE WEIGHT</b>	
KERB 460KGS, PAY 350KGS	
<b>Q'TY LOADED IN CONTAINER</b>	
15 SETS IN CKD / 20GP; 32 SETS IN CKD / 40HQ	
<b>OPTIONAL PARTS</b>	
1. SEMI-CABIN 2. CARGO BOX SIZE AND TYPE OPTIONAL ON REQUEST 3. HYDRAULIC BRAKING SYSTEM 4. DUMPER SYSTEM	





# ZL250ZH-LW



## SPECIFICATION

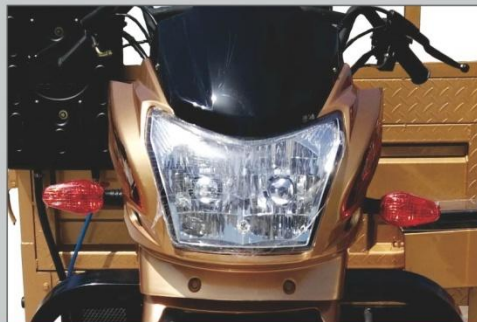
ENGINE	
ENGINE TYPE	SINGLE CYLINDER, WATER COOLING, 4-STROKE
DISPLACEMENT	246.3ML
COMPRESSION RATIO	10.0:1
MAX POWER OUTPUT	11.5 / 7000 KW/R/MIN
MAX TORQUE	19.5 / 5000 N-M/R/MIN
CLUTCH	
WET MULTI-PLATE, PRESSURE SPLASH	
TRANSMISSION & REVERSE	
5 FORWARD GEARS + 1 REVERSE	
STEERING MECHANISM	
STEERING HANDLE BAR	
CHASSIS	
DOUBLE KEEL CHASSIS WITH EXTENDED FOOTREST (FR / RR 50×100 RECTANGULAR STEEL TUBE)	
FRONT SUSPENSION	
LONGBA TYPE FRONT SHOCK ABSORBER	
REAR SUSPENSION	
7 PCS PICKUP LEAF SPRING, CHAN'AN REAR AXLE	
BRAKING SYSTEM	
FR 160, RR 220, MECHANICAL BRAKING	
WHEEL TIRE	
FR / RR 4.50-12	
BATTERY	
12V / 9AH	
STARTING METHOD	
ELECTRIC / KICK STARTER	
FUEL TANK	
GASOLINE, 13L	
FUEL CONSUMPTION	
≤354	
GROUND CLEARANCE	
160MM	
MAX SPEED	
60KM/H	
OVERALL DIMENSION	
WHEEL BASE	2230MM
DIMENSION	3400×1350×1550MM
CARGO BOX SIZE	1800×1350MM
VEHICLE WEIGHT	
KERB 470KGS, PAY 350KGS	
Q'TY LOADED IN CONTAINER	
15 SETS IN CKD / 20GP; 32 SETS IN CKD / 40HQ	
OPTIONAL PARTS	
1. SEMI-CABIN 2. CARGO BOX SIZE AND TYPE OPTIONAL ON REQUEST 3. HYDRAULIC BRAKING SYSTEM 4. DUMPER SYSTEM	







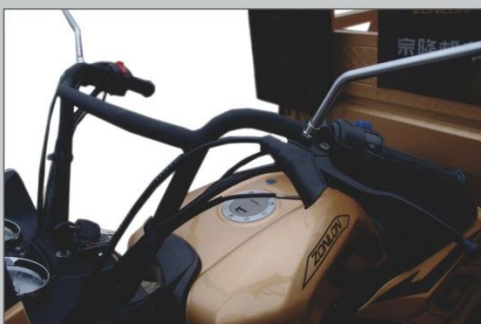
METER



HEAD LAMP



FRONT SHOCK ABSORBER



STEERING HANDLE BAR



DOUBLE KEEL CHASSIS / EXTENDED FOOTREST



ENGINE MOUNTING WITH SPRING



SLEEK FUEL TANK



QUALITY TYRE



STRONG CARGO HOPPER



# ZL150ZH-TZ



## SPECIFICATION

<b>ENGINE</b>	
ENGINE TYPE	SINGLE CYLINDER, AIR COOLING, 4-STROKE
DISPLACEMENT	149ML
COMPRESSION RATIO	9.1:1
MAX POWER OUTPUT	8.5 / 8000 KW/R/MIN
MAX TORQUE	10 / 7500 N·M/R/MIN
<b>CLUTCH</b>	WET MULTI-PLATE, PRESSURE SPLASH
<b>TRANSMISSION &amp; REVERSE</b>	5 FORWARD GEARS + 1 REVERSE
<b>STEERING MECHANISM</b>	STEERING HANDLE BAR
<b>CHASSIS</b>	FR 40×80 RR 40×60 RECTANGULAR STEEL TUBE
<b>FRONT SUSPENSION</b>	SPECIAL FRONT SHOCK ABSORBER
<b>REAR SUSPENSION</b>	COMBINED 3+2 PCS LEAF SPRING, CHAN'AN REAR AXLE (5 BOLTS) WITH DAMPER
<b>BRAKING SYSTEM</b>	FR 160, RR 220, MECHANICAL BRAKING
<b>WHEEL TIRE</b>	FR / RR 5.00-12
<b>BATTERY</b>	12V / 9AH
<b>STARTING METHOD</b>	ELECTRIC / KICK STARTER
<b>FUEL TANK</b>	GASOLINE, 12L
<b>FUEL CONSUMPTION</b>	≤354
<b>GROUND CLEARANCE</b>	160MM
<b>MAX SPEED</b>	55KM/H
<b>OVERALL DIMENSION</b>	
WHEEL BASE	2370MM
DIMENSION	3300×1350×1380MM
CARGO BOX SIZE	1800×1200MM
<b>VEHICLE WEIGHT</b>	KERB 360KGS, PAY 300KGS
<b>Q'TY LOADED IN CONTAINER</b>	22 SETS IN CKD / 20GP ; 45 SETS IN CKD / 40HQ
<b>OPTIONAL PARTS</b>	1. SEMI-CABIN 2. DUMPER SYSTEM





# ZL150ZH-A5



## SPECIFICATION

ENGINE	
ENGINE TYPE	SINGLE CYLINDER, AIR COOLING, 4 STROKE
DISPLACEMENT	149ML
COMPRESSION RATIO	9.1:1
MAX POWER OUTPUT	8.5 / 8000 KW/R/MIN
MAX TORQUE	10 / 7500 N·M/R/MIN
CLUTCH	
WET MULTI PLATE, PRSSURE SPLASH	
TRANSMISSION & REVERSE	
5 FORWARD GEAR + 1 REVERSE	
STEERING MECHANISM	
STEERING HANDLE BAR	
CHASSIS	
FR / RR 40×60 RECTANGULAR STEEL TUBE	
FRONT SUSPENSION	
FRONT SHOCK ABSORBER WITH SPRING	
REAR SUSPENSION	
INTEGRATED 6 PCS LEAF SPRING, CHAN'AN AUTOMOTIVE REAR AXLE	
BRAKING SYSTEM	
FR 130 / RR 160, MECHANICAL BRAKING	
WHEEL TIRE	
FR / RR 4.50-12	
BATTERY	
12V / 9AH	
STARTING METHOD	
ELECTRIC / KICK STARTER	
FUEL TANK	
GASOLINE, 7L	
FUEL CONSUMPTION	
≤354	
GROUND CLEARANCE	
160MM	
MAX SPEED	
55KM/H	
OVERALL DIMENSION	
WHEEL BASE	2250MM
DIMENSION	3200×1100×1320MM
CARGO BOX SIZE	1600×1100MM
VEHICLE WEIGHT	
KERB 320KGS, PAY 300KGS	
Q'TY LOADED IN CONTAINER	
24 SETS IN CKD / 20GP; 50 SETS IN CKD / 40HQ	
OPTIONAL PARTS	
SEMI CABIN WITH CIRCULAR HEADLAMP	



# ZL200ZH-5N

## SPECIFICATION



<b>ENGINE</b>	
ENGINE TYPE	SINGLE CYLINDER, WATER COOLING, 4-STROKE
DISPLACEMENT	197ML
COMPRESSION RATIO	10.2:1
MAX POWER OUTPUT	10.3 / 7500 KW/R/MIN
MAX TORQUE	14.2 / 6000 N·M/R/MIN
<b>CLUTCH</b>	
WET MULTI-PLATE, PRESSURE SPLASH	
<b>TRANSMISSION &amp; REVERSE</b>	
5 FORWARD GEARS + 1 REVERSE	
<b>STEERING MECHANISM</b>	
STEERING HANDLE BAR	
<b>CHASSIS</b>	
FR/RR 50×100 RECTANGULAR STEEL TUBE	
<b>FRONT SUSPENSION</b>	
ZONLON OFF-ROAD SHOCK ABSORBER	
<b>REAR SUSPENSION</b>	
7 PCS PICKUP LEAF SPRING, RIBBED JLW SEMI-FLOAT REAR AXLE WITH BOOSTER	
<b>BRAKING SYSTEM</b>	
FR 130, RR 220, MECHANICAL BRAKING	
<b>WHEEL TIRE</b>	
FR / RR 4.50-12	
<b>BATTERY</b>	
12V / 28AH	
<b>STARTING METHOD</b>	
ELECTRIC / KICK STARTER	
<b>FUEL TANK</b>	
GASOLINE, 12L	
<b>FUEL CONSUMPTION</b>	
≤354	
<b>GROUND CLEARANCE</b>	
160MM	
<b>MAX SPEED</b>	
60KM/H	
<b>OVERALL DIMENSION</b>	
WHEEL BASE	2200MM
DIMENSION	3400×1350×1550MM
CARGO BOX SIZE	1800×1350MM
<b>VEHICLE WEIGHT</b>	
KERB 450KGS, PAY 350KGS	
<b>Q'TY LOADED IN CONTAINER</b>	
24 SETS IN CKD / 20GP; 52 SETS IN CKD / 40HQ	
<b>OPTIONAL PARTS</b>	
1. SEMI-CABIN 2. CARGO BOX SIZE AND TYPE OPTIONAL ON REQUEST 3. HYDRAULIC BRAKING SYSTEM 4. DUMPER SYSTEM	





# ZL150ZH-QL



## SPECIFICATION

<b>ENGINE</b>	
ENGINE TYPE	SINGLE CYLINDER, AIR COOLING, 4-STROKE
DISPLACEMENT	149ML
COMPRESSION RATIO	9.1:1
MAX POWER OUTPUT	8.5 / 8000 KW/R/MIN
MAX TORQUE	10 / 7500 N·M/R/MIN
<b>CLUTCH</b>	
WET MULTI-PLATE, PRESSURE SPLASH	
<b>TRANSMISSION &amp; REVERSE</b>	
5 FORWARD GEARS + 1 REVERSE	
<b>STEERING MECHANISM</b>	
STEERING HANDLE BAR	
<b>CHASSIS</b>	
40×80 RECTANGULAR STEEL TUBE	
<b>FRONT SUSPENSION</b>	
Q1 SOLO STEM FRONT SHOCK ABSORBER	
<b>REAR SUSPENSION</b>	
INTEGRATED 7 PIECES LEAF SPRING, REAR AXLE WITH BOOSTER (4 BOLTS) WITH DAMPER	
<b>BRAKING SYSTEM</b>	
FR 130, RR 180, MECHANICAL BRAKING	
<b>WHEEL TIRE</b>	
FR / RR 4.50-12	
<b>BATTERY</b>	
12V / 9AH	
<b>STARTING METHOD</b>	
ELECTRIC / KICK STARTER	
<b>FUEL TANK</b>	
GASOLINE, 12L	
<b>FUEL CONSUMPTION</b>	
≤354	
<b>GROUND CLEARANCE</b>	
160MM	
<b>MAX SPEED</b>	
55KM/H	
<b>OVERALL DIMENSION</b>	
WHEEL BASE	2370MM
DIMENSION	3490×1250×1380MM
CARGO BOX SIZE	2000×1250MM
<b>VEHICLE WEIGHT</b>	
KERB 360KGS, PAY 300KGS	
<b>Q'TY LOADED IN CONTAINER</b>	
25 SETS IN CKD / 20GP; 52 SETS IN CKD / 40HQ	
<b>OPTIONAL PARTS</b>	
1. SEMI-CABIN    2. DUMPER SYSTEM	



# ZL150ZH-Q



## SPECIFICATION

<b>ENGINE</b>	
ENGINE TYPE	SINGLE CYLINDER, AIR COOLING, 4-STROKE
DISPLACEMENT	149ML
COMPRESSION RATIO	9.1:1
MAX POWER OUTPUT	8.5 / 8000 KW/R/MIN
MAX TORQUE	10 / 7500 N-M/R/MIN
<b>CLUTCH</b>	
WET MULTI-PLATE,PRESSURE SPLASH	
<b>TRANSMISSION &amp; REVERSE</b>	
5 FORWARD GEARS + 1 REVERSE	
<b>STEERING MECHANISM</b>	
STEERING HANDLE BAR	
<b>CHASSIS</b>	
40×80 RECTANGULAR TUBE, BALL TIPPED BUMPER, CHANGPAO BIG FOOTREST	
<b>FRONT SUSPENSION</b>	
232# WITH OUTER SPRING Φ43 CHOPPER SHOCK ABSORBER	
<b>REAR SUSPENSION</b>	
INTEGRATED 5 PCS LEAF SPRING: LIGHT DUTY GII REAR AXLE WITH BOOSTER	
<b>BRAKING SYSTEM</b>	
FR 130, RR 180, MECHANICAL BRAKING	
<b>WHEEL TIRE</b>	
FR / RR 4.50-12	
<b>BATTERY</b>	
12V / 9AH	
<b>STARTING METHOD</b>	
ELECTRIC /KICK STARTER	
<b>FUEL TANK</b>	
GASOLINE, 12L	
<b>FUEL CONSUMPTION</b>	
≤354	
<b>GROUND CLEARANCE</b>	
160MM	
<b>MAX SPEED</b>	
55KM/H	
<b>OVERALL DIMENSION</b>	
WHEEL BASE	2200MM
DIMENSION	3290×1200×1380MM
CARGO BOX SIZE	1800×1200MM
<b>VEHICLE WEIGHT</b>	
KERB 320KGS, PAY 300KGS	
<b>Q'TY LOADED IN CONTAINER</b>	
30 SETS IN CKD / 20GP; 60 SETS IN CKD / 40HQ	
<b>OPTIONAL PARTS</b>	
SEMI-CABIN	





# ZL130ZH

## SPECIFICATION



ENGINE	
ENGINE TYPE	SINGLE CYLINDER, AIR COOLING, 4-STROKE
DISPLACEMENT	122.8ML
COMPRESSION RATIO	9.5:1
MAX POWER OUTPUT	6.1 / 7500 KW/R/MIN
MAX TORQUE	9.0 / 5500 N-M/R/MIN
CLUTCH	
WET MULTI-PLATE, PRESSURE SPLASH	
TRANSMISSION & REVERSE	
4 FORWARD GEARS + 1 REVERSE	
STEERING MECHANISM	
STEERING HANDLE BAR	
CHASSIS	
40×60 RECTANGULAR STEEL TUBE	
FRONT SUSPENSION	
130 HYDRAULIC SHOCK ABSORBER	
REAR SUSPENSION	
INTEGRATED 6 PCS LEAF SPRING, TAPER DIFFERENTIAL BOX REAR AXLE	
BRAKING SYSTEM	
FR 130 / RR 160, MECHANICAL BRAKING	
WHEEL TIRE	
FR 3.75-12, RR 4.00-12	
BATTERY	
12V / 9AH	
STARTING METHOD	
ELECTRIC / KICK STARTER	
FUEL TANK	
GASOLINE, 7L	
FUEL CONSUMPTION	
≤288	
GROUND CLEARANCE	
160MM	
MAX SPEED	
50KM/H	
OVERALL DIMENSION	
WHEEL BASE	1950MM
DIMENSION	2900×900×1330MM
CARGO BOX SIZE	1400×900MM
VEHICLE WEIGHT	
KERB 260KGS, PAY 260KGS	
Q'TY LOADED IN CONTAINER	
25 SETS IN CKD / 20GP; 49 SETS IN CKD / 40HQ	





**ZL200ZH-LG**

**ZL200ZH-LGO**

**ZL200ZH-LF3**

**ZL200ZH-LF4**

## SPECIFICATION

ENGINE				
ENGINE TYPE	SINGLE CYLINDER, WATER COOLING,4-STROKE			
DISPLACEMENT	197ML	197ML	197ML	197ML
COMPRESSION RATIO	10.2:1	10.2:1	10.2:1	10.2:1
MAX POWER OUTPUT	10.3 / 7500 KW/R/MIN	10.3 / 7500 KW/R/MIN	10.3 / 7500 KW/R/MIN	10.3 / 7500 KW/R/MIN
MAX TORQUE	14.2 / 6000 N·M/R/MIN	14.2 / 6000 N·M/R/MIN	14.2 / 6000 N·M/R/MIN	14.2 / 6000 N·M/R/MIN
TRANSMISSION & REVERSE	5 FORWARD GEARS + 1 REVERSE			
STEERING MECHANISM	STEERING HANDLE BAR			
FRONT SUSPENSION	TYPE 800 W270 SOLO FRONT SHOCK ABSORBER			
REAR SUSPENSION	7 PCS PICKUP LEAF SPRING, CHAN'AN REAR AXLE			
BRAKING SYSTEM	FR 130, RR 220, MECHANICAL BRAKING			
WHEEL TIRE	FR / RR 4.50-12			
BATTERY	12V / 9AH	12V / 28AH		
STARTING METHOD	ELECTRIC / KICK STARTER			
FUEL TANK	GASOLINE, 15L			
MAX SPEED	60KM/H			
OVERALL DIMENSION				
WHEEL BASE	2520MM	2520MM	2490MM	2490MM
DIMENSION	3610×1350×1820MM	3610×1350×1820MM	3600×1350×1850MM	3600×1350×1850MM
CARGO BOX SIZE	1800×1350MM	1800×1350MM	1800×1350MM	1800×1350MM
VEHICLE WEIGHT	520KGS / 350KGS	520KGS / 350KGS	620KGS / 350KGS	620KGS / 350KGS
Q'TY LOADED IN CONTAINER	12 SETS IN CKD/20GP	26 SETS IN CKD/40HQ	4 SETS IN CKD/20GP	8 SETS IN CKD/40HQ





**ZL200ZH-LF5**

**ZLK305**

**ZLK608**

**ZLK800**

## SPECIFICATION

ENGINE				
ENGINE TYPE	SINGLE CYLINDER, WATER COOLING, 4-STROKE			TYPE 465 ENGINE
DISPLACEMENT	197ML	197ML	197ML	970ML
COMPRESSION RATIO	10.2:1	10.2:1	10.2:1	8.8:1
MAX POWER OUTPUT	10.3 / 7500 KW/R/MIN	10.3 / 7500 KW/R/MIN	10.3 / 7500 KW/R/MIN	27 / 5000 KW/R/ MIN
MAX TORQUE	14.2 / 6000 N-M/R/MIN	14.2 / 6000 N-M/R/MIN	14.2 / 6000 N-M/R/MIN	67/ 3000-4000 N-M/R/MIN
TRANSMISSION & REVERSE	5 FORWARD GEARS + 1 REVERSE			4 FORWARD + 1 REVERSE
STEERING MECHANISM	WHEEL STEERING	STEERING HANDLE BAR	WHEEL STEERING	WHEEL STEERING
FRONT SUSPENSION	TYPE 800 W270 SOLO FRONT SHOCK ABSORBER		TYPE 285	TYPE 285
REAR SUSPENSION	INTEGRATED 7 PCS PICKUP LEAF SPRING, CHAN'AN REAR AXLE			
BRAKING SYSTEM	FR / RR 220, HYDRAULIC BRAKING	FR 130, RR 220, MECHANICAL BRAKING	FR / RR 220, HYDRAULIC BRAKING	FR 220, RR 240, HYDRAULIC BRAKING
WHEEL TIRE	FR / RR 4.50-12			FR / RR 165R
BATTERY	12V / 28AH			12V / 36AH
STARTING METHOD	ELECTRIC / KICK STARTER			ELECTRICAL
FUEL TANK	GASOLINE, 15L	GASOLINE, 16L	GASOLINE, 16L	GASOLINE, 32L
MAX SPEED	60KM/H			
OVERALL DIMENSION				
WHEEL BASE	2490MM	2490MM	2490MM	2800MM
DIMENSION	3600×1350×1850MM	3600×1350×1850MM	3600×1350×1850MM	4000×1400×1900MM
CARGO BOX SIZE	1800×1350MM			2200×1400MM
VEHICLE WEIGHT	620KGS / 350KGS	620KGS / 350KGS	620KGS / 350KGS	980KGS / 350KGS
Q'TY LOADED IN CONTAINER	4 SETS IN CKD / 20GP, 8 SETS IN CKD / 40HQ			
OPTIONAL PARTS	1. CARGO BOX SIZE AND TYPE OPTIONAL ON REQUEST 2. HYDRAULIC BRAKING SYSTEM 3. DUMPER SYSTEM			

# PASSENGER SERIES

ZONLON PASSENGER TRICYCLE, AFFORDABLE, DURABLE, POWERFUL PASSENGER RICKSHAW, BEST CHOICE FOR MOTO TAXI IN CITY OR COUNTRYSIDE.





# ZL150ZK-4S



## SPECIFICATION

ENGINE	
ENGINE TYPE	SINGLE CYLINDER, AIR COOLING, 4-STROKE
DISPLACEMENT	149ML
COMPRESSION RATIO	9.1:1
MAX POWER OUTPUT	8.5 / 8000 KW/R/MIN
MAX TORQUE	10 / 7500 N-M/R/MIN
CLUTCH	WET, MULTI-PLATE, PRESSURE SPLASH
TRANSMISSION & REVERSE	5 FORWARD GEARS + 1 REVERSE
STEERING MECHANISM	STEERING HANDLE BAR
CHASSIS	40×60 RECTANGULAR TUBE
FRONT SUSPENSION	ELEVATED SHOCK ABSORBER
REAR SUSPENSION	COMBINED 3+2 PCS LEAF SPRING, LIGHT CHAN'AN REAR AXLE
BRAKING SYSTEM	FR130, RR180, MECHANICAL BRAKING
WHEEL TIRE	FR / RR 4.50-12
BATTERY	12V / 9AH
STARTING METHOD	ELECTRIC / KICK STARTER
FUEL TANK	GASOLINE, 12L
FUEL CONSUMPTION	≤354
GROUND CLEARANCE	160MM
MAX SPEED	55KM/H
OVERALL DIMENSION	
WHEEL BASE	2150MM
DIMENSION	3180×1250×1780MM
SEATS CAPACITY	4 PASSENGERS
VEHICLE WEIGHT	KERB 420KGS, PAY 350KGS
Q'TY LOADED IN CONTAINER	15 SETS IN CKD / 20GP; 32 SETS IN CKD / 40HQ



# ZL200ZK-7S



# ZL200ZK-5S



## SPECIFICATION

ENGINE	
ENGINE TYPE	SINGLE CYLINDER, WATER COOLING, 4-STROKE
DISPLACEMENT	197ML
COMPRESSION RATIO	10.2:1
MAX POWER OUTPUT	10.3 / 7500 KW/R/MIN
MAX TORQUE	14.2 / 6000 N·M/R/MIN
CLUTCH	
WET, MULTI-PLATE, PRESSURE SPLASH	
TRANSMISSION & REVERSE	
5 FORWARD GEARS + 1 REVERSE	
STEERING MECHANISM	
STEERING HANDLE BAR	
CHASSIS	
FRONT 40×100, REAR 50×100 RECTANGULAR STEEL TUBE	
FRONT SUSPENSION	
ELEVATED FRONT SHOCK ABSORBER	
REAR SUSPENSION	
INTEGRATED OUTER MOUNTING 7 PCS LEAF SPRING, CHAN'AN REAR AXLE	
BRAKING SYSTEM	
FR 130, RR 180, MECHANICAL BRAKING	
WHEEL TIRE	
FR / RR 4.50-12	
BATTERY	
12V / 9AH	
STARTING METHOD	
ELECTRIC / KICK STARTER	
FUEL TANK	
GASOLINE, 12L	
FUEL CONSUMPTION	
≤354	
GROUND CLEARANCE	
160MM	
MAX SPEED	
55KM/H	
OVERALL DIMENSION	
WHEEL BASE	2470MM / 2270MM
DIMENSION	3300×1250×1200MM / 3100×1250×1200MM
SEATS CAPACITY	7 / 5 PASSENGERS
VEHICLE WEIGHT	
KERB 370 / 350KGS, PAY 750 / 600KGS	
Q'TY LOADED IN CONTAINER	
12 SETS IN CKD / 20GP; 28 SETS IN CKD / 40HQ	





# ZL175ZK-X



## SPECIFICATION

ENGINE	
ENGINE TYPE	SINGLE CYLINDER, WATER COOLING, 4-STROKE
DISPLACEMENT	175 ML
COMPRESSION RATIO	10.3:1
MAX POWER OUTPUT	9.5 / 7000 KW/R/MIN
MAX TORQUE	14 / 6000 N-M/R/MIN
CLUTCH	
WET, MULTI-PLATE, PRESSURE SPLASH	
TRANSMISSION & REVERSE	
5 FORWARD GEARS + 1 REVERSE	
STEERING MECHANISM	
STEERING HANDLE BAR	
BRAKING SYSTEM	
FR 130 RR 180, FR MECHANICAL / RR HYDRAULIC BRAKING	
WHEEL TYRE	
FR / RR 4.50-12	
BATTERY	
12V / 9AH	
STARTING METHOD	
ELECTRIC / KICK STARTER	
FUEL TANK CAPACITY	
GASOLINE, 12L	
FUEL CONSUMPTION	
≤354	
MAX SPEED	
55KM/H	
OVERALL DIMENSION	
WHEEL BASE	2620MM
DIMENSION	2850×1150×1650MM
SEATS CAPACITY	4 PASSENGERS
VEHICLE WEIGHT	
KERB 350KGS, PAY 320KGS	
Q'TY LOADED IN CONTAINER	
8 SETS IN CKD / 20GP, 16 SETS IN CKD / 40HQ	



# ZL250ZK-BJ

## SPECIFICATION



ENGINE	
ENGINE TYPE	SINGLE CYLINDER, FORCED AIR COOLING, 4-STROKE
DISPLACEMENT	229.2ML
COMPRESSION RATIO	8.9:1-9.5:1
MAX POWER OUTPUT	10.2 / 7000 KW/R/MIN
MAX TORQUE	17 / 5000 N·M/R/MIN
CLUTCH	
WET, MULTI-PLATE, PRESSURE SPLASH	
TRANSMISSION & REVERSE	
5 FORWARD GEARS + 1 REVERSE	
STEERING MECHANISM	
ALUM. STEERING HANDLE BAR	
BRAKING SYSTEM	
HYDRAULIC BRAKING	
WHEEL TYRE	
FR / RR 4.00-8	
BATTERY	
12V / 9AH	
STARTING METHOD	
ELECTRIC / KICK STARTER	
FUEL TANK CAPACITY	
GASOLINE, 12L	
FUEL CONSUMPTION	
≤354	
MAX SPEED	
55KM/H	
OVERALL DIMENSION	
WHEEL BASE	2340MM
DIMENSION	3240×1250×1800 MM
LOAD CAPACITY	6-8 PASSENGERS
VEHICLE WEIGHT	
KERB 350KGS, PAY 320KGS	
Q'TY LOADED IN CONTAINER	
16 SETS IN CKD / 40HQ	





# ZL200ZK-TK



## SPECIFICATION

<b>ENGINE</b>	
ENGINE TYPE	SINGLE CYLINDER, FORCED AIR COOLING, 4-STROKE
DISPLACEMENT	197.0ML
COMPRESSION RATIO	8.5:1~9.2:1
MAX POWER OUTPUT	8.6 / 7000 KW/R/MIN
MAX TORQUE	13.9 / 5500 N·M/R/MIN
<b>CLUTCH</b>	
WET, MULTI-PLATE, PRESSURE SPLASH	
<b>TRANSMISSION &amp; REVERSE</b>	
5 FORWARD GEARS + 1 REVERSE	
<b>STEERING MECHANISM</b>	
ALUM. ALLOY STEERING HANDLE BAR	
<b>BRAKING SYSTEM</b>	
HYDRAULIC BRAKING	
<b>WHEEL TYRE</b>	
FR / RR 4.00-8	
<b>BATTERY</b>	
12V / 9AH	
<b>STARTING METHOD</b>	
ELECTRIC / KICK STARTER	
<b>FUEL TANK CAPACITY</b>	
GASOLINE, 12L	
<b>FUEL CONSUMPTION</b>	
≤354	
<b>MAX SPEED</b>	
55KM/H	
<b>OVERALL DIMENSION</b>	
WHEEL BASE	1985MM
DIMENSION	2650×1330×1740MM
LOAD CAPACITY	4 PASSENGER
<b>VEHICLE WEIGHT</b>	
KERB 350KGS,PAY 320KGS	
<b>Q'TY LOADED IN CONTAINER</b>	
8 SETS IN SKD / 20GP; 27 SETS IN SKD / 40HQ	



# ZL200ZK-LIMO

## SPECIFICATION



ENGINE	
ENGINE TYPE	SINGLE CYLINDER, WATER COOLING, 4-STROKE
DISPLACEMENT	197.0 ML
COMPRESSION RATIO	10.5:1
MAX POWER OUTPUT	10.3 / 7500 KW/R/MIN
MAX TORQUE	14.2 / 6000 N-M/R/MIN
CLUTCH	
WET, MULTI-PLATE, PRESSURE SPLASH	
TRANSMISSION & REVERSE	
5 FORWARD GEARS + 1 REVERSE	
STEERING MECHANISM	
STEERING HANDLE BAR	
CHASSIS	
FR / RR 50×100 RECTANGULAR STEEL TUBE	
FRONT SUSPENSION	
TYPE 800 W270 SOLO FRONT SHOCK ABSORBER WITH INTERCHANGEABLE WHEEL	
REAR SUSPENSION	
INTERGRATED OUTER MOUNTING 7 PCS LEAF SPRING, CHAN'AN REAR AXLE	
BRAKING SYSTEM	
FR 130, RR 180, FR MECHANICAL / RR HYDRAULIC BRAKING	
WHEEL TIRE	
FR / RR 4.50-12	
BATTERY	
12V / 9AH	
STARTING METHOD	
ELECTRIC / KICK STARTER	
FUEL TANK	
GASOLINE, 12L	
FUEL CONSUMPTION	
≤354	
GROUND CLEARANCE	
160MM	
MAX SPEED	
55 KM/H	
OVERALL DIMENSION	
WHEEL BASE	FR 1740MM / RR 2730MM
DIMENSION	5830×1400×2030MM
SEATS CAPACITY	18~20 PASSENGERS
VEHICLE WEIGHT	
KERB 550KGS, PAY 580KGS	
Q'TY LOADED IN CONTAINER	
12 SETS IN CKD / 20GP; 25 SETS IN CKD / 40HQ	







LEFT-SIDE FRONT VIEW



RIGHT-SIDE FRONT VIEW



RIGHT SIDE VIEW



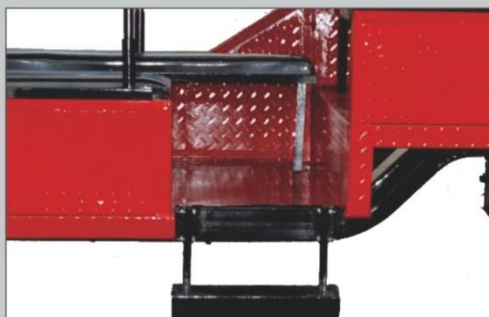
FR SHOCK ABSORBER



WATER-COOLING ENGINE



DRIVER TOP COVER



PASSENGER FOOT STEP



VENTILATION WINDOW



SPACIOUS PASSENGER DECK



# SPECIAL VEHICLE SERIES

- NOT ONLY CARGO TRUCK, IT IS MOBILE RESTAURANT, MOBILE COFFEE HOUSE, MOBILE TEA HOUSE, MOBILE GROCERY SHOP AND MOBILE ICE CREAM OUTLET.
- PERMANENT SUPPLIER FOR EUROPEAN MEDICAL AID PROGRAM FOR AFRICAN COUNTRIES.
- EFFICIENT, CONVENIENT AND QUICK TRANSPORTATION OF URBAN DAILY GARBAGE FOR CLEAN, FRESH AND HEALTHY LIFE.





# BAJA TIPPER ZL200ZH-BT



## SPECIFICATION

ENGINE	
ENGINE TYPE	SINGLE CYLINDER, WATER COOLING, 4-STROKE
DISPLACEMENT	197ML
COMPRESSION RATIO	10.2:1
MAX POWER OUTPUT	10.3 / 7500 KW/R/MIN
MAX TORQUE	14.2 / 6000 N-M/R/MIN
CLUTCH	
WET, MULTI-PLATE, PRESSURE SPLASH	
TRANSMISSION & REVERSE	
5 FORWARD GEARS + 1 REVERSE	
TIPPER SYSTEM	
SINGLE, 2-STAGE, OIL HYDRAULIC CYLINDER	
STEERING MECHANISM	
STEERING HANDLE BAR	
CHASSIS	
FR 40×100, RR 50×100 RECTANGULAR STEEL TUBE	
FRONT SUSPENSION	
TYPE 800 W270 SOLO FRONT SHOCK ABSORBER WITH INTERCHANGEABLE WHEEL	
REAR SUSPENSION	
INTEGRATED PICKUP 7 PCS LEAF SPRING, CHAN'AN REAR AXLE	
BRAKING SYSTEM	
FR 130, RR 220, MECHANICAL BRAKING	
WHEEL TIRE	
FR / RR 4.50-12	
BATTERY	
12V / 9AH	
STARTING METHOD	
ELECTRIC / KICK STARTER	
FUEL TANK	
GASOLINE, 12L	
FUEL CONSUMPTION	
≤354	
GROUND CLEARANCE	
160MM	
MAX SPEED	
60KM/H	
OVERALL DIMENSION	
WHEEL BASE	2350MM
DIMENSION	3500×1350×1820MM
CARGO BOX SIZE	2000×1350×590MM
VEHICLE WEIGHT	
KERB 500KGS, PAY 350KGS	
Q'TY LOADED IN CONTAINER	
10 SETS IN CKD / 20GP; 22 SETS IN CKD / 40HQ	



# MOBILE SHOP ZL200ZH-MS



## SPECIFICATION

ENGINE	
ENGINE TYPE	SINGLE CYLINDER, WATER COOLING, 4-STROKE
DISPLACEMENT	197ML
COMPRESSION RATIO	10.2:1
MAX POWER OUTPUT	10.3 / 8000 KW/R/MIN
MAX TORQUE	14.2 / 6000 N-M/R/MIN
CLUTCH	
WET MULTI-PLATE, PRESSURE SPLASH	
TRANSMISSION & REVERSE	
5 FORWARD GEARS + 1 REVERSE	
STEERING MECHANISM	
STEERING HANDLE BAR	
CHASSIS	
FR / RR 50×100 RECTANGULAR STEEL TUBE	
FRONT SUSPENSION	
TYPE 800 W270 SOLO FRONT SHOCK ABSORBER WITH INTERCHANGEABLE WHEEL	
REAR SUSPENSION	
GREASED OUTER MOUNTING 5+4 COMBINED LEAF SPRING, SEMI-FLOAT REAR AXLE	
BRAKING SYSTEM	
FR 130, RR 220, MECHANICAL BRAKING	
WHEEL TIRE	
FR / RR 4.50-12	
BATTERY	
12V / 28AH	
STARTING METHOD	
ELECTRIC / KICK STARTER	
FUEL TANK	
GASOLINE, 12L	
FUEL CONSUMPTION	
≤354	
GROUND CLEARANCE	
160MM	
MAX SPEED	
60KM/H	
OVERALL DIMENSION	
WHEEL BASE	2200MM
DIMENSION	3550×1350×1560MM
CARGO BOX SIZE	2000×1350×1200 MM
VEHICLE WEIGHT	
KERB 420KGS, PAY 350KGS	
Q'TY LOADED IN CONTAINER	
20 SETS IN CKD / 20GP; 42 SETS IN CKD / 40HQ	
OPTIONAL PARTS	
SEMI-CABIN	







METER



HEAD LAMP



REAR SUSPENSION



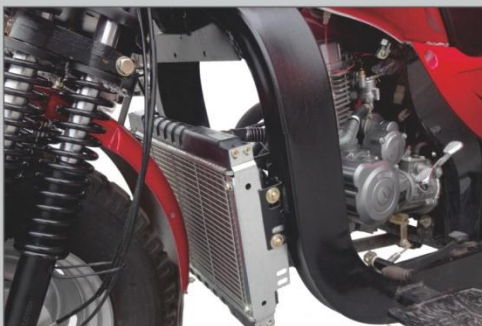
CLOSED CARGO BOX



BIG FOOTREST



4-SPRING FR SHOCK ABSORBER



KEEL CHASSIS



3 HYDRAULIC DOOR SHOP



QUALITY TYRE

# CANVAS AMBULANCE ZL150ZK-CA



## SPECIFICATION

ENGINE	
ENGINE TYPE	SINGLE CYLINDER, AIR COOLING, 4-STROKE
DISPLACEMENT	149ML
COMPRESSION RATIO	9.1:1
MAX POWER OUTPUT	8.5 / 8000 KW/R/MIN
MAX TORQUE	10 / 7500 N-M/R/MIN
CLUTCH	
WET, MULTI-PLATE, PRESSURE SPLASH	
TRANSMISSION & REVERSE	
5 FORWARD GEARS + 1 REVERSE	
STEERING MECHANISM	
STEERING HANDLE BAR	
CHASSIS	
FR / RR 40×80 RECTANGULAR STEEL TUBE	
FRONT SUSPENSION	
SOLO STEM FRONT SHOCK ABSORBER FOR Q1	
REAR SUSPENSION	
INTEGRATED 7 PCS LEAF SPRING, 4 BOLTS REAR AXLE WITH BOOTER & DAMPER	
BRAKING SYSTEM	
FR 130, RR 180, MECHANICAL BRAKING	
WHEEL TIRE	
FR / RR 4.50-12	
BATTERY	
12V / 9AH	
STARTING METHOD	
ELECTRIC / KICK STARTER	
FUEL TANK	
GASOLINE, 12L	
FUEL CONSUMPTION	
≤354	
GROUND CLEARANCE	
160MM	
MAX SPEED	
55 KM/H	
OVERALL DIMENSION	
WHEEL BASE	2300MM
DIMENSION	3590×1400×1990MM
SEATS CAPACITY	1 PATIENT + 2~3 DOCTORS & NURSES
VEHICLE WEIGHT	
KERB 410KGS, PAY 300KGS	
Q'TY LOADED IN CONTAINER	
15 SETS IN CKD / 20GP; 32 SETS IN CKD / 40HQ	





# BOX AMBULANCE ZL200ZK-BA



## SPECIFICATION

ENGINE	
ENGINE TYPE	SINGLE CYLINDER, AIR COOLING, 4-STROKE
DISPLACEMENT	193ML
COMPRESSION RATIO	9.0:1
MAX POWER OUTPUT	10.2 / 8000KW/R/MIN
MAX TORQUE	14.5 / 6000N-M/R/MIN
CLUTCH	
WET, MULTI-PLATE, PRESSURE SPLASH	
TRANSMISSION & REVERSE	
5 FORWARD GEARS + 1 REVERSE	
STEERING MECHANISM	
STEERING HANDLE BAR	
CHASSIS	
FR 50×100, RR 40×80 RECTANGULAR STEEL TUBE	
FRONT SUSPENSION	
TYPE 800 W270 SOLO FRONT SHOCK ABSORBER WITH INTERCHANGEABLE WHEEL	
REAR SUSPENSION	
GREASED OUTER MOUNTING 5+4 COMBINED LEAF SPRING, SEMI-FLOAT CHAN'AN REAR AXLE	
BRAKING SYSTEM	
FR 130, RR 220, MECHANICAL BRAKING	
WHEEL TIRE	
FR / RR 4.50-12	
BATTERY	
12V / 28AH	
STARTING METHOD	
ELECTRIC / KICK STARTER	
FUEL TANK	
GASOLINE, 12L	
FUEL CONSUMPTION	
≤354	
GROUND CLEARANCE	
160MM	
MAX SPEED	
60KM/H	
OVERALL DIMENSION	
WHEEL BASE	2490MM
DIMENSION	3700×1350×1990MM
SEATS CAPACITY	1 PATIENT + 2~3 DOCTORS & NURSES
VEHICLE WEIGHT	
KERB 480KGS, PAY 350KGS	
Q'TY LOADED IN CONTAINER	
8 SETS IN CKD / 20GP; 20 SETS IN CKD / 40HQ	



# GARBAGE DUMPER ZL200ZH-GD

## SPECIFICATION



ENGINE	
ENGINE TYPE	SINGLE CYLINDER, WATER COOLING, 4-STROKE
DISPLACEMENT	197ML
COMPRESSION RATIO	10.2:1
MAX POWER OUTPUT	10.3 / 7500 KW/R/MIN
MAX TORQUE	14.2 / 6000 N-M/R/MIN
CLUTCH	
WET, MULTI-PLATE, PRESSURE SPLASH	
TRANSMISSION & REVERSE	
5 FORWARD GEARS + 1 REVERSE	
TIPPER SYSTEM	
SINGLE, 2-STAGE, HYDRAULIC CYLINDER	
STEERING MECHANISM	
STEERING HANDLE BAR	
CHASSIS	
FR 50×100, RR 40×80 RECTANGULAR STEEL TUBE	
FRONT SUSPENSION	
TYPE 800 W270 SOLO FRONT SHOCK ABSORBER WITH INTERCHANGEABLE WHEEL	
REAR SUSPENSION	
GREASED OUTER MOUNTING 5+4 COMBINED LEAF SPRING, SEMI-FLOAT CHAN'AN REAR AXLE	
BRAKING SYSTEM	
FR 130, RR 220, MECHANICAL BRAKING	
WHEEL TIRE	
FR / RR 4.50-12	
BATTERY	
12V / 28AH	
STARTING METHOD	
ELECTRIC / KICK STARTER	
FUEL TANK	
GASOLINE, 12L	
FUEL CONSUMPTION	
≤354	
GROUND CLEARANCE	
160MM	
MAX SPEED	
60KM/H	
OVERALL DIMENSION	
WHEEL BASE	2200MM
DIMENSION	3400×1350×1850MM
CARGO BOX SIZE	1800×1350×1300MM
VEHICLE WEIGHT	
KERB 520KGS, PAY 350KGS	
Q'TY LOADED IN CONTAINER	
10 SETS IN CKD / 20GP; 22 SETS IN CKD / 40HQ	





# GARBAGE TIPPER ZL250ZH-GT



## SPECIFICATION

ENGINE	
ENGINE TYPE	SINGLE CYLINDER, AIR COOLING, 4-STROKE
DISPLACEMENT	229.5 ML
COMPRESSION RATIO	10.5 : 1
MAX POWER OUTPUT	10.5 / 7000 KW/R/MIN
MAX TORQUE	16.5 / 5500 N-M/R/MIN
CLUTCH	
WET, MULTI-PLATE, PRESSURE SPLASH	
TRANSMISSION & REVERSE	
5 FORWARD GEARS + 1 REVERSE	
TIPPER SYSTEM	
SINGLE, 2-STAGE, HYDRAULIC CYLINDER	
STEERING MECHANISM	
STEERING HANDLE BAR	
CHASSIS	
FR 50×100, RR 40×80 RECTANGULAR STEEL TUBE	
FRONT SUSPENSION	
TYPE 800 W270 SOLO FRONT SHOCK ABSORBER WITH INTERCHANGEABLE WHEEL	
REAR SUSPENSION	
INTEGRATED PICKUP 7 PCS LEAF SPRING, CHAN'AN REAR AXLE	
BRAKING SYSTEM	
FR 130, RR 220, MECHANICAL BRAKING	
WHEEL TIRE	
FR / RR 5.00-12	
BATTERY	
12V / 28AH	
STARTING METHOD	
ELECTRIC / KICK STARTER	
FUEL TANK	
GASOLINE, 13L	
FUEL CONSUMPTION	
≤354	
GROUND CLEARANCE	
170MM	
MAX SPEED	
60KM/H	
OVERALL DIMENSION	
WHEEL BASE	2200MM
DIMENSION	3600×1350×1920MM
CARGO BOX SIZE	1800×1350×1000MM
VEHICLE WEIGHT	
KERB 530KGS, PAY 350KGS	
Q'TY LOADED IN CONTAINER	
10 SETS IN CKD / 20GP; 22 SETS IN CKD / 40HQ	





**BE YOUR  
PARTNER**

## **WE SUPPLY NOT ONLY SPARE PARTS**

- NO WORRIES FOR SPARE PARTS AVAILABILITY USING ZONLON TRICYCLE.
- USER MANUAL, MAINTENANCE AND REPAIRING MANUAL, SPARE PARTS CATALOGUE AND ASSEMBLING INSTRUCTIONS FOR WORKSHOP AND ON-SITE TRAINING COURSES.
- OEM AND ODM DESIGN AND MANUFACTURE ACCORDING TO CUSTOMER'S DEMAND.



# ENGINE & PARTS



ZONLON ENGINE 130 AIR COOLING



ZONLON ENGINE 175 AIR COOLING



ZONLON ENGINE 175 DUAL COOLING



OIL COOLER



ZONLON ENGINE 200 DUAL COOLING III



ZONLON ENGINE 200 V8



ZONLON ENGINE 250 DUAL COOLING II



NORMAL RADIATOR



ZONLON ENGINE 300 ICY WATER COOLING



ZONLON ENGINE 300 SUPER COOLING



ZONLON ENGINE 300 WATER COOLING



ALUMINUM RADIATOR

# CARGO BOX



L550



L440



L550 GATE INCREASED



CARGO HOPPER G440



CARGO HOPPER G380



G350



GAOKE I 450



GAOKE II 350



K SERIES 440



ENGINEERING I 440



ENGINEERING II 380



ENGINEERING III 520  
(TAIL GATE HEIGHTENED)



ENGINEERING K800



ENGINEERING V



WHOLE SIDE GATE 320



ENGINEERING  
MULTI RIBS I 400



ENGINEERING L440



DUMPER



LEADER B



LEADER B DOUBLE FENCE



# FRONT SHOCK ABSORBER



FRONT SHOCK ABSORBER 130



FRONT SHOCK ABSORBER  
232 LONGBAO



FRONT SHOCK ABSORBER  
232 LONGBAO



FRONT SHOCK ABSORBER  
TYPE 800 270 SOLO STEM



FRONT SHOCK ABSORBER 4G  
QUADRO SPRING SOLO STEM



FRONT SHOCK ABSORBER 4G  
QUADRO SPRING ELEVATED TUBE



FRONT SHOCK ABSORBER  
4G VINTAGE



FRONT SHOCK ABSORBER  
250 SOLO STEM



FRONT SHOCK ABSORBER LIGHT  
SOLO STEM WITH DAMPER



FRONT SHOCK ABSORBER  
SOLO STEM



FRONT SHOCK ABSORBER  
ELEVATED TUBE WITH DAMPER



FRONT SHOCK ABSORBER  
ELEVATED TUBE



FRONT SHOCK ABSORBER  
LONGBA TYPE



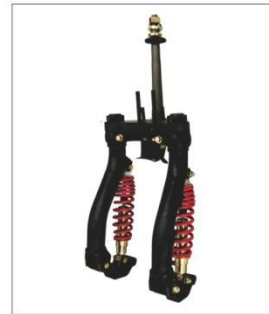
FRONT SHOCK ABSORBER  
EUROAM ELEVATED TUBE



FRONT SHOCK ABSORBER  
EUROAM SOLO STEM



FRONT SHOCK ABSORBER  
DUAL SPRING COIL



FRONT SHOCK ABSORBER  
ZONLON GAOKE SOLO STEM



FRONT SHOCK ABSORBER  
ZONLON OFF-ROAD

# REAR AXLE & REVERSE



NORMAL REAR AXLE DB-YYB-00



REAR AXLE WITH BOOSTER



REAR AXLE WITH BOOSTER



REAR AXLE WITH JLW BOOSTER



REINFORCED REAR AXLE WITH  
JLW BOOSTER



AUTOMOTIVE REAR AXLE 1



AUTOMOTIVE REAR AXLE 2



HEAVY-DUTY REAR AXLE FOR K800



REVERSE GEAR WITH PEDAL



REVERSE GEAR MANUAL



REVERSE GEAR OFF-ROAD 500



REVERSE GEAR OFF-ROAD



# LEAF SPRING



INTEGRATED 5 PIECES LEAF SPRING RED



INTEGRATED 6 PIECES LEAF SPRING BLACK



INTEGRATED 7 PIECES LEAF SPRING BLACK



INTEGRATED 6 PIECES LEAF SPRING RED



PICKUP LEAF SPRING 7 PIECES BLACK



PICKUP LEAF SPRING 9 PIECES BLACK



COMBINED 3+2 LEAF SPRING RED



COMBINED 3+3 LEAF SPRING RED



COMBINED 4+3 LEAF SPRING RED



COMBINED 4+4 LEAF SPRING RED



COMBINE 5+4 LEAF SPRING RED



COMBINE 7+4 LEAF SPRING RED

# TYRE & RIM



3.25-16



3.75-12



4.00-12



4.50-12



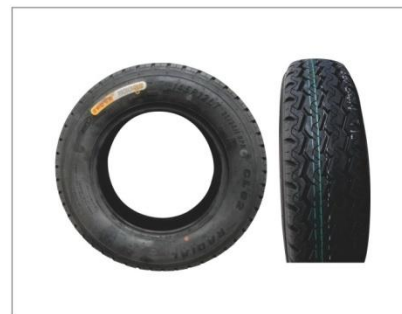
5.00-12



5.50-13



6.00-13



145R



155R



165R



WHEEL RIM (4 BOLTS)



WHEEL RIM (5 BOLTS)



# SEMI CABIN



**QQ ABS CABIN**



**Q SERIES  
STEEL CABIN**



**T TYPE  
STEEL CABIN**



**STEEL CABIN WITH  
SQUARE HEADLIGHT**

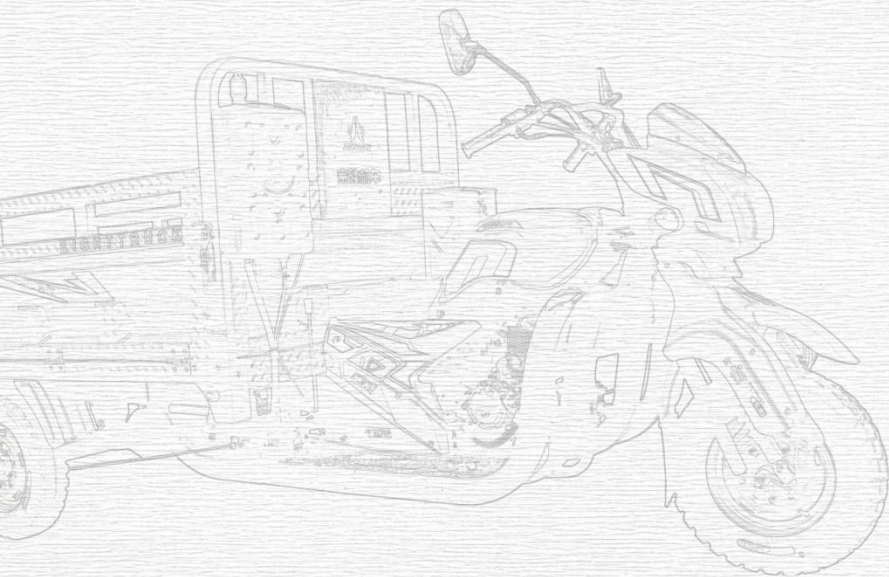


# WORLDWIDE ZONLON MARKETS



BRAZIL  
ARGENTINA  
PERU  
CHILE  
COLOMBIA  
EQUADOR  
MEXICO  
DOMINICAN  
COSTA RICA





**ZONLON**

**CHONGQING ZONGWO VEHICLE INDUSTRY (GROUP) CO., LTD.**  
**CHONGQING ZONGLONG MOTOR TRICYCLE CO., LTD.**

Add: Zhongxing Ave., Zone B, Luohuang Industrial Park, Jiangjin District, Chongqing-402283, P. R. China Tel: +86-23-47600531 Fax: +86-23-47600372

E-mail: [sales@cqzonlon.com](mailto:sales@cqzonlon.com) Web site: <http://www.cqzongwo.com>